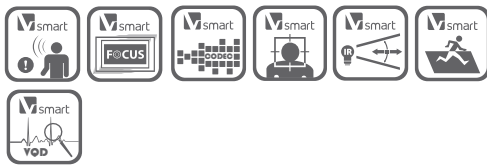


DO-21CD4324F-I

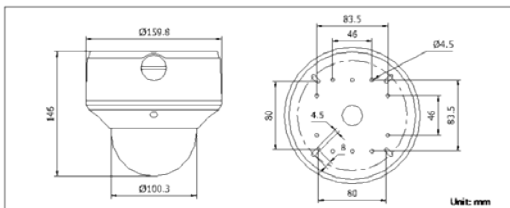
2MP Full HD Outdoor Dome Network Camera



Key Features

- Up to 1920 x 1080 high resolution
- Full HD1080p video
- Smart Codec
- DWDR, 3D DNR
- Triple streams
- On-board storage, up to 64GB
- Smart Focus: Motorized VF lens (-Z)
- Smart VQD
- Smart Facial Detection
- Intrusion Detection
- Built-in heater & fan(-H)
- Defog
- 8~32mm Motorized VF lens optional

Dimensions



| DP-22CD4324F-I | |
|-----------------------------|--|
| Camera | |
| Image sensor | 1/2.8" progressive scan CMOS |
| Min. illumination | 0.01 lux@F1.2, AGC on, 0.014 lux@F1.4, AGC on, 0 lux with IR |
| Shutter time | 1s ~ 1/100,000s |
| Slow shutter | Yes |
| Lens | 2.8 ~ 12mm @F1.4, angle of view: 113° ~ 33.8° (-Z: motorized VF lens) 8mm-32mm @ F1.4 angle of view: 31.2°~10.2° |
| Lens mount | Φ14 |
| Angle adjustment | Pan: 0° ~ 355°, tilt: 0° ~ 75°, rotation: 0° ~ 355° |
| Auto iris | DC drive |
| Day & night | ICR (Auto/Schedule/Alarm Trigger) |
| Digital noise reduction | 3D DNR |
| Wide dynamic range | DWDR |
| Compression standard | |
| Video compression | H.264 / MPEG4 / MJPEG |
| H.264 codec profile | Baseline profile / main profile / high profile |
| Video bit rate | 32 Kbps ~ 16 Mbps |
| Audio compression | G.711/G.722.1/G.726/MP2L2 |
| Audio bit rate | 64Kbps(G.711) / 16Kbps(G.722.1) / 16Kbps(G.726) / 32-128Kbps(MP2L2) *only for -S model |
| Image | |
| Max. resolution | 1920 x 1080 |
| Frame rate | 50 Hz: 25fps (1920 x 1080), 25fps (1280 x 960), 25fps (1280 x 720) 60 Hz: 30fps (1920 x 1080), 30fps (1280 x 960), 30fps (1280 x 720) |
| 3rd stream | Independent setting, up to: 50Hz: 25fps (1920 x 1080), 60Hz: 30fps (1920 x 1080) |
| Image settings | Rotate mode, saturation, brightness, contrast, grayscale adjustable through client software or web browser |
| BLC | Yes, zone configurable |
| HLC | Yes |
| Defog | Yes |
| EIS | Yes |
| Picture overlay | 128 x 128, BMP 24bit, zone configurable |
| ROI | Support |
| Network | |
| Network storage | NAS |
| Alarm trigger | Intrusion detection, Defocus detection, Motion detection, Face detection, line crossing detection, Dynamic analysis, Tampering alarm, Network disconnect, IP address conflict, Storage exception |
| Protocols | TCP/IP, ICMP, HTTP, HTTPS, FTP, DHCP, DNS, DDNS, RTP, RTSP, RTCP, PPPoE, NTP, UPnP, SMTP, SNMP, IGMP, 802.1X, QoS, IPv6, Bonjour (SIP optional) |
| Security | User authentication, watermark, IP address filtering, anonymous access, reset |
| System compatibility | ONVIF, PSIA, CGI |
| Interface | |
| Communication interface | 1 RJ45 10M / 100M ethernet port |
| Video Output | 1 Vp-p composite output (75 Ω/RCA, for lens adjustment when installation) |
| On-board storage | Built-in Micro SD/SDHC/SDXC slot, up to 64 GB |
| General | |
| Operating conditions | -30°C ~ 60°C (-22°F ~ 140°F), humidity 95% or less (non-condensing) -H: -40°C ~ 60°C (-40°F ~ 140°F) , with smart heater on |
| Power supply | 24 VAC ± 10%, PoE (802.3af) |
| Power consumption | Max. 12.5W |
| IR range | Up to 30m |
| Ingress protection | IP66 |
| Impact protection | IEC60068-2-75Eh, 20J; EN50102, up to IK10 |
| Dimensions | Φ 159.8 x 146mm (Φ 6.29" x 5.75") |
| Weight | 2100g (4.62 lbs) |