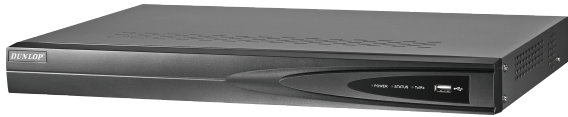
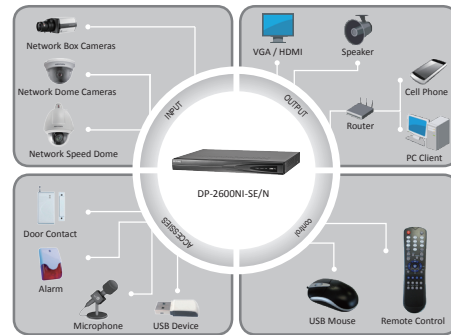


DP-2604NI-SE/N

Embedded NVR



DP-2604NI-SE/N



Key features

- Third-party network cameras supported
- Up to 5 Megapixels resolution recording
- HDMI and VGA output at up to 1920×1080P resolution
- HDD quota and group management
- 4/8 independent network interfaces for built-in switch (DS-7604/08/16NI-SE/N)

Rear Panel of DP-2604NI-SE/N



1. LAN Network Interface
2. RS-485 Interface
3. 12VDC Power Input
4. Power Switch
5. USB Interface
6. GND
7. HDMI Interface
8. VGA Output
9. Audio In
10. Audio Out

DP-2604NI-SE/N	
Video/Audio input	
IP video input	4-ch
Two-way audio input	1-ch, RCA (2.0 Vp-p, 1kΩ)
Incoming bandwidth	20Mbps
Video/Audio output	
Decoding resolution	5MP / 3MP / 1080p / UXGA / 720p / VGA / 4CIF / DCIF / 2CIF / CIF / QCIF
HDMI / VGA output	1-ch, resolution: 1920 × 1080P /60Hz, 1600 × 1200 /60Hz, 1280 × 1024 /60Hz, 1280 × 720 /60Hz, 1024 × 768 /60Hz
Audio output	1-ch, RCA (Linear, 1kΩ)
Playback resolution	5MP / 3MP / 1080P / UXGA / 720P / VGA / 4CIF / DCIF / 2CIF / CIF / QCIF
Synchronous playback	4-ch 720P / 2-ch 1080P / 1-ch 5MP
Hard disk	
SATA	1 SATA interface for 1 HDD
Capacity	Up to 4TB for each disk
External interface	
Network interface	1 RJ-45 10 / 100 / 1000 Mbps self-adaptive Ethernet interface
Built-in switch network interface (DS-7604/08/16NI-SE/N supported)	4 independent 10 /100Mbps Ethernet interfaces
Serial interface	1 RS-485 half-duplex interface
USB interface	2 × USB 2.0
Alarm in/out	4/1 optional
General	
Power supply	12 VDC
Consumption	≤ 10 W (without hard disk)
Working temperature	-10 °C ~ +55 °C
Working humidity	10% ~ 90%
Chassis	Stand-alone 1U chassis
Dimensions (W × D × H)	315 × 242 × 45 mm
Weight	≤ 2 Kg (without hard disk)